

A Deaf-Mute Postmaster.

In the list of these who have proven that their deafness did not deter them from winning success, honor and fame, is to be found the name of a Wisconsin man, Chas. Reed, of Menasha, Wis. So far as is known, Reed is the only deaf-mute postmaster in the world.

There are deaf-mutes employed as clerks in various postoffices and on the government departmental service, but Reed enjoys the distinction of being the only deaf-mute postmaster.

Like most of his fellow-sufferers, Reed was born deaf, and that one fact makes his success all the more noteworthy, inasmuch as it is a difficult thing for some persons born deaf to acquire a good command and facile use of English. He was educated in the Delavan and Jacksonville, Ill., institutions for the deaf, and the only college extant for the deaf—Gallaudet College in Washington City. After leaving school he was employed on the Menasha Press for several years, next operated a farm for two years and then became bookkeeper until he went into the postoffice. He has been postmaster and assistant postmaster for more than 12 years.

Reed has never learned to talk and read lips, but he has no trouble whatever in expressing himself readily in the sign language or with pencil and paper. While he is a good business man, with broad views and executive abilities, he is also a great reader and spends his leisure moments in the midst of his books.—*Cleveland Press.*



We're just a little ahead. Other clothes make good clothing—is there another that has a deaf-mute salesman. Mr. A. L. Thomas looks after our deaf friends; sells them anything man or boy wears. Clothing, fixings, hats and shoes. Fills mail-orders. ROGERS, PEET & COMPANY.

BASKET PICNIC

GIVEN UNDER THE AUSPICES OF The Guild of Silent Workers, AT Van Cortlandt Park, (New York City) ON Saturday, July 26.

Come in the morning, bringing lunch baskets or boxes filled with good things. Games for prizes, and plenty of fun.

Badges - - 15 cents (Entitling admission to grounds.)

COMMITTEE OF ARRANGEMENTS. Misses: Mabel Pearce, Violet Pearce, Nettie Elsworth, Gertrude Turner, Bella Bensinger, Louise Kummer, Rachel Fenall, Lizzie Weeks, Bertha Block, Mrs. S. Knox. Messrs: Rev. Chamberlain, C. Q. Mann, I. N. Soper, C. Fetscher, W. G. Jones, J. H. Keiser, E. Elsworth, E. A. Hodgson, R. E. Maynard, Chairman.

ROUTES TO PARK. Take Sixth or Ninth Avenue "L" trains to 155th Street. Walk east on 155th Street Viaduct to and across bridge over Harlem River. Then take the Jerome Ave. trolley direct to grounds. "L" fare, including trolley, 8 cents. Take Second or Third Avenue "L" to 155th St. Then take Willis Avenue trolley, transferring at Jerome Ave. "L" fare, including trolley, 8 cents. From towns on Harlem and New Haven R. R., ride to Mt. Vernon. Take Vonkers trolley, transferring to Jerome Avenue. From East Side, north of Harlem River, take the Third Avenue Union trolley, transferring at 161st or 177th St., and again at Jerome Avenue. When aboard Jerome Ave. cars, ask the conductor to let you off at Muller's Van Cortlandt Park Hotel, Woodlawn. Picnic grounds directly opposite.

SUBSCRIBE FOR THE Deaf-Mutes' Journal ONLY! \$1 a Year.

PATENTS
Quickly secured. OUR FEE DUE WHEN PATENT OBTAINED. Send model, sketch or photo, with description for free report as to patentability. 44-PAGE HAND-BOOK FREE. Contains to names and full information. WRITE FOR COPY OF OUR SPECIAL OFFER. It is the most liberal proposition ever made by a patent attorney, and EVERY INVENTOR SHOULD READ IT before applying for patent. Address: **H. B. WILLSON & CO.** PATENT LAWYERS, 1400 Bldg., WASHINGTON, D. C.



THE REAL ESTATE OWNER has the whole earth for a foundation to his fortune. Real Estate is the only permanent fortune. Real Estate, in a rapidly growing city, is a fortune that grows greater and greater all of the time and produces an income at the same time. Duluth is a rapidly growing city. The Howard Investment Company was incorporated in 1899, with an authorized capital of \$500,000, to acquire improved real estate in Duluth. That is the only kind of real estate it owns or will own. Every investment made for the Company has the careful attention of its officers, who live in Duluth. The Company pays cash for all of its holdings. It has no indebtedness. By taking stock in the Howard Investment Company you are simply buying an interest in unencumbered improved real estate in Duluth, one of the most rapidly growing and promising cities in the United States. Preferred Stock is \$50 per share, 5 per cent is guaranteed on this stock. Common Stock is \$25 per share. It will pay at least 6 per cent. from the start. For further particulars and a list of stockholders, address **JAY COOKE HOWARD, Secretary, DULUTH, MINNESOTA.**

ONE of our Deaf-Mute Agents in Michigan is making \$15 a week selling our Pictures and Books. You can do as well around your own home if you try. Write at once. **The Walker Publishing Co., 134 Van Buren St. Chicago, Ill.**

RIDER AGENTS WANTED
one in each town to ride and exhibit a sample 1902 model bicycle of our manufacture. **YOU CAN MAKE \$10 TO \$50 A WEEK** besides having a wheel to ride for yourself. **1902 Models Guaranteed \$9 to \$15** **1900 and 1901 Models BEST \$7 to \$11** **500 Second Hand Wheels \$3 to \$8** taken in trade by our Chicago retail stores, all makes and models, good as new. We ship any bicycle **ON APPROVAL** to anyone without a cent deposit in advance and allow **10 DAYS FREE TRIAL.** You take no risk in ordering from us, as you do not need to pay a cent if the bicycle does not suit you. **DO NOT BUY A WHEEL UNTIL YOU HAVE WRITTEN FOR OUR DO NOT BUY FACTORY PRICES & FREE TRIAL OFFER.** Tires, equipment, sundries and sporting goods of all kinds, at half regular prices, in our big free sundry catalogue. Contains a world of useful information. Write for it. We want a reliable person in each town to distribute catalogues for us in exchange for a bicycle. Write today for free catalogue and our special offer. **J. L. MEAD CYCLE CO., Chicago, Ill.**

ANNOUNCEMENT.
The Twenty-third Annual Convention of the Empire State Association will be held in the Council Chamber of the City Hall, Third and State Streets, Troy, New York, August 28--29, 1902.

The following is the provisional program, subject to modification and amendment:

THURSDAY, AUGUST 28TH.
10:30 A.M.—Opening Session. (Details later.)
2:00 P.M.—Business Session. (Details later.)
7:30 P.M.—Religious services at St. Paul's Chapel, on State Street, opposite the City Hall. Addresses by prominent clergymen and laymen, on the general subject of "Social, Moral and Spiritual Advancement of the Deaf."
8:30 P.M.—Reception in the Parish rooms, to visitors, by the deaf of Albany and Troy.

FRIDAY, AUGUST 29TH.
10:30 A.M.—Business Session. (Details later.)
2:00 P.M.—Closing Session. (Details later.)
8:30 P.M.—Moonlight trip on the historic Hudson, on Troy and Albany steamers. Fare for round trip of twelve miles, 10 cents. Boat leaves foot of State Street.

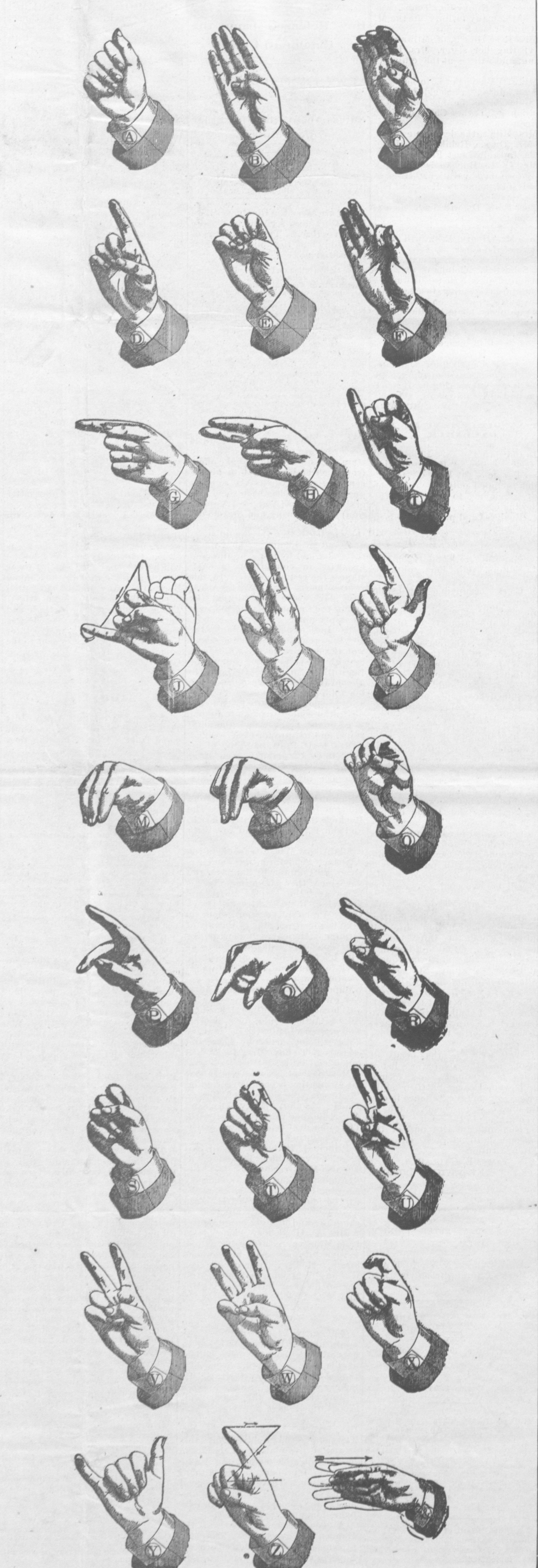
SATURDAY, AUGUST 30TH.
Trolley Excursion to Kaydeross Park, Saratoga Lake, a distance of thirty-four miles, through the Upper Hudson River Valley. Chartered Car leaves Troy at 9 A.M. Fare for round trip, 65 cents, if ninety persons go in a body. It is requested that those intending to go on the Excursion notify the Chairman as soon as possible.

Headquarters of the Empire State Association, at the Mansion House, Monument Square, cor. Broadway and Second Street.
Rates—Single, \$2.50 per day, American plan.
Double, (two in room) 2.00 per day, " "

We can get no railroad reductions, as the rates are cheaper by either trolley or boat.
The Citizens' Line (Troy and New York), \$2.50 round trip, good for thirty days.

REV. HARRY VAN ALLEN, C. AUGUSTUS SMITH, CLARENCE A. BOXLEY, Chairman.
All communications referring to excursion, hotels, etc., should be addressed to the Chairman Local Committee, Empire State Association of Deaf-Mutes, Troy, N. Y. All other business to Rev. C. O. Dantzer, Secretary, 3 Mason Street, Rochester, N. Y. **ALEX. L. PACH, President.**

American Manual Alphabet.



TRADE MARK
CYKO
PRINTS AT NIGHT
Photo Paper
Prints at Night
If your dealer cannot supply you, send 20c. for one dozen 4 x 5 size with developer.
THE ANTHONY & SCOVILL CO.
122 & 124 Fifth Avenue, NEW YORK.
Atlas Block, cor. Randolph and Wabash CHICAGO.

Theo. I. Lounsbury
Book Job and Commercial Printer
Convention Proceedings
Institution Reports
Institution Stationery
Society and Church Work
208 East 59th St., NEW YORK, N. Y.
ALPHABET CARDS.
50 Cards, with name, .85
100 " " " .50
350 " " " 1.00
50 Cards, without name .25
100 " " " .40
200 " " " .75
EXTRA FINE VISITING CARDS.
50 Cards (no alphabets). 40
100 " " " .60
Cash in advance. Stamps accepted. Stamps must be sent for reply to inquiries, or for sample.

Photographs
BUFFALO 1901
Empire State Convention Teachers of the Deaf Supt's and Principals
Platinum..... \$2.00
Carbon..... 1.50
Silver..... 1.2
Sent on receipt of price.

PACH BROS.,
935 B'way, New York.
Ronald Douglas.
General Landscape Photographer
Railway Scenery a Specialty
We also make Etchings on Copper and Zinc from our own Negatives only.
Livingston, N. J.

Groups
OR SINGLE PICTURES with scenery, or house as background, a specialty.
For particulars, write or call on JOHN L. CONNERTON, River, cor. Hoosick Street, TROY, N. Y.

Get Insured.
FRANK B. THOMPSON
Fire Insurance (Broker), 45 WILLIAM STREET, New York City.
Fire Insurance policies procured in all the leading Companies in New York City.

EMPLOYMENT WANTED.
A MIDDLE aged woman, moderately strong, would like employment. SARAH A. PORTER. Inquire in R. N. Armstrong's Grocery Store, 100 East 118th Street, New York City.